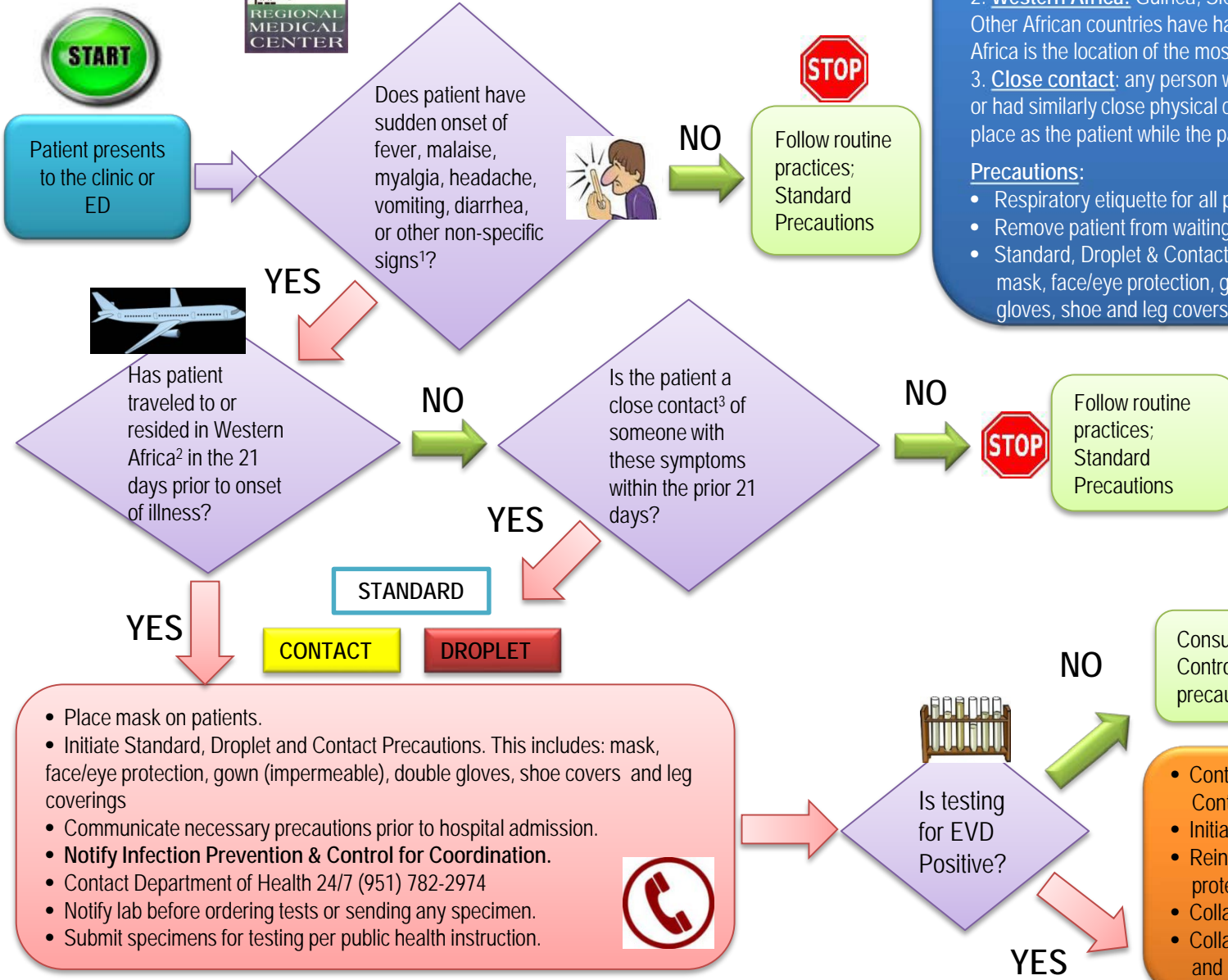


Screening and Patient Management Algorithm for Ebola Virus Disease (EVD)



Notes:

- Typical symptoms:** fever, headache, joint/muscle aches, weakness, diarrhea, vomiting, abd pain, lack of appetite. Some patients may report additional symptoms.
- Western Africa:** Guinea, Sierra Leone, Nigeria, Liberia. Note: Other African countries have had Ebola historically, but Western Africa is the location of the most recent outbreak.
- Close contact:** any person who provided care for the patient or had similarly close physical contact; or stayed at the same place as the patient while the patient was ill.

Precautions:

- Respiratory etiquette for all patients including mask.
- Remove patient from waiting area
- Standard, Droplet & Contact Precautions. This includes mask, face/eye protection, gown (impermeable), double gloves, shoe and leg covers

This tool, the screening criteria and recommended precautions are subject to change based on new information from the WHO, CDC and/or Department of Health.